

# **WELCOME NEW YELLOW JACKETS!**



**ST. AUGUSTINE HIGH SCHOOL  
CATHY MITTELSTADT, PRINCIPAL**

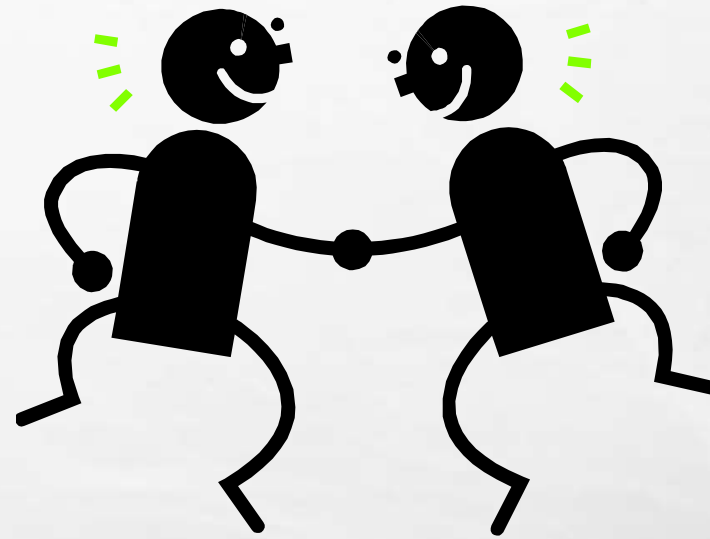


# WHO ARE WE?



# INTRODUCTIONS

- **GEORGE MASTORIDIS, ASSISTANT PRINCIPAL**
- **KRISTIN BOZEMAN, ASSISTANT PRINCIPAL**
- **JEFF HOLLAND, ATHLETIC DIRECTOR**
- **KATIE MALTBY, CAREER SPECIALIST**
- **DEANS: ALBERTO CRESPO AND WANDA LOGAN**
- **YOUTH RESOURCE DEPUTY: SCOTT WRIGHT**
- **COUNSELORS: DENA BECHTLE, GINGER FREEMANN, KRISTINE NOVELLY, KAY OLSON AND DEBI RADAKER**
- **NURSE: VICKI QUEEN**





# LINK CREW

WHAT IS LINK CREW?!?!



# **ACADEMICS**

**KRISTIN BOZEMAN, ASSISTANT PRINCIPAL**



# 9<sup>TH</sup> GRADE SCHEDULES INCLUDE:

- ENGLISH
- MATH
- SCIENCE
- HOPE
- ACADEMY CLASS OR TEEN LEADERSHIP
- ELECTIVES

**AICE, AVID and HONORS schedules may also include:**

- AP Human Geography
- World Language

# WHAT IS HOPE?

- **HEALTH OPPORTUNITIES IN PHYSICAL EDUCATION**
- **REQUIRED FOR GRADUATION**
  - **CAN BE SUBSTITUTED FOR BY 2 YEARS OF JROTC**
  - **STUDENTS COMPLETING THE AICE CURRICULUM ARE EXEMPT**
- **PE UNIFORM IS REQUIRED – COST \$20 (FOR SALE FRIDAY)**



# GRADE POINT AVERAGE (G.P.A.)

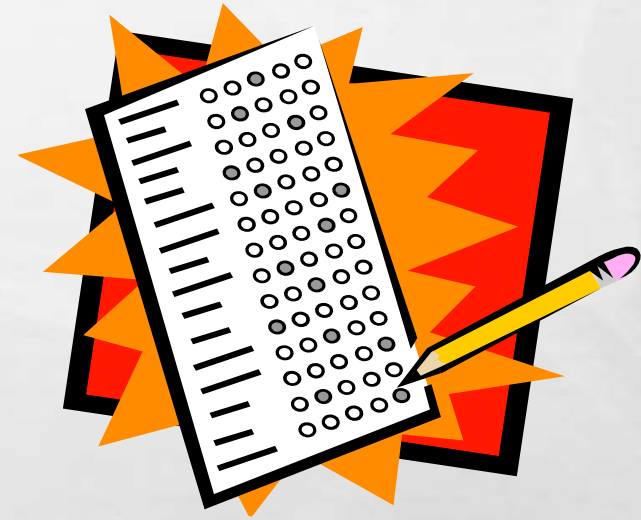
- **EVERY SEMESTER GRADE IS PART OF YOUR G.P.A.**
  - **A = 4 POINTS**
  - **B = 3 POINTS**
  - **C = 2 POINTS**
  - **D = 1 POINT**
  - **F = 0 POINTS**
- **WEIGHTED COURSES EARN EXTRA VALUE**
  - **HONORS AND PRE-AICE (+0.5)**
  - **AICE, AP AND DUAL ENROLLMENT (+1.0)**

**To graduate from  
HS – you must  
have a  
cumulative G.P.A.  
of 2.0 or higher!**



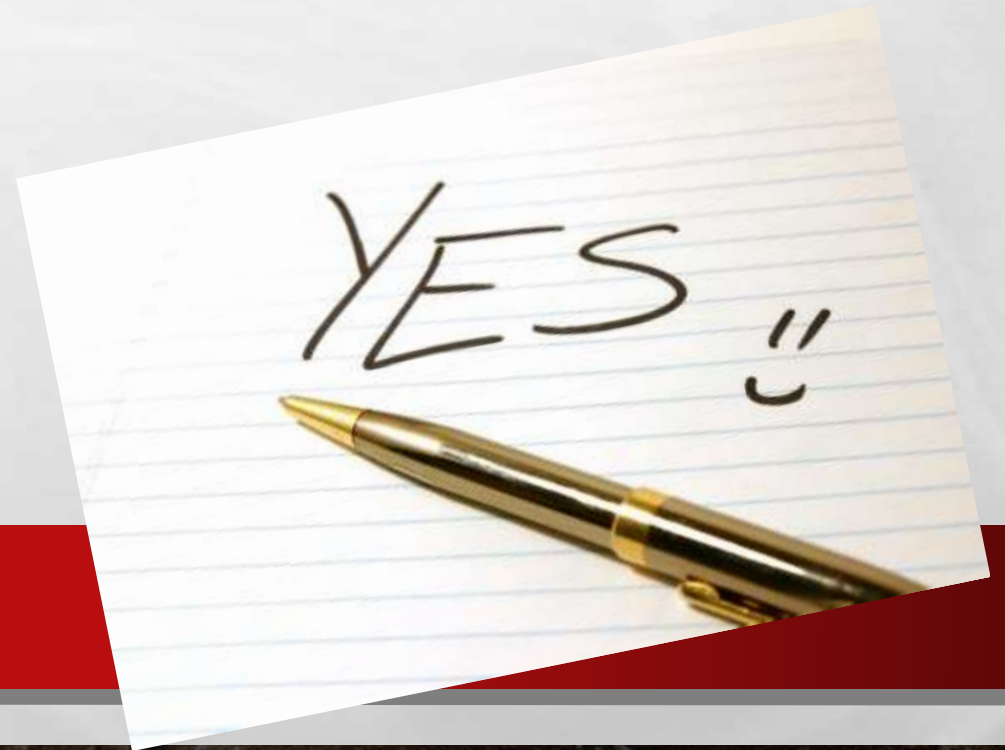
# END OF COURSE EXAMS (EOC)

- **STATE TEST GIVEN AT THE END OF A PARTICULAR COURSE**
- **COUNTS AS 30% OF YOUR YEAR-LONG GRADE FOR THAT COURSE**
- **ALGEBRA 1, GEOMETRY, BIOLOGY, US HISTORY, ALGEBRA 2**
- **YOU MUST PASS THE ALGEBRA 1 EOC TO GRADUATE!**



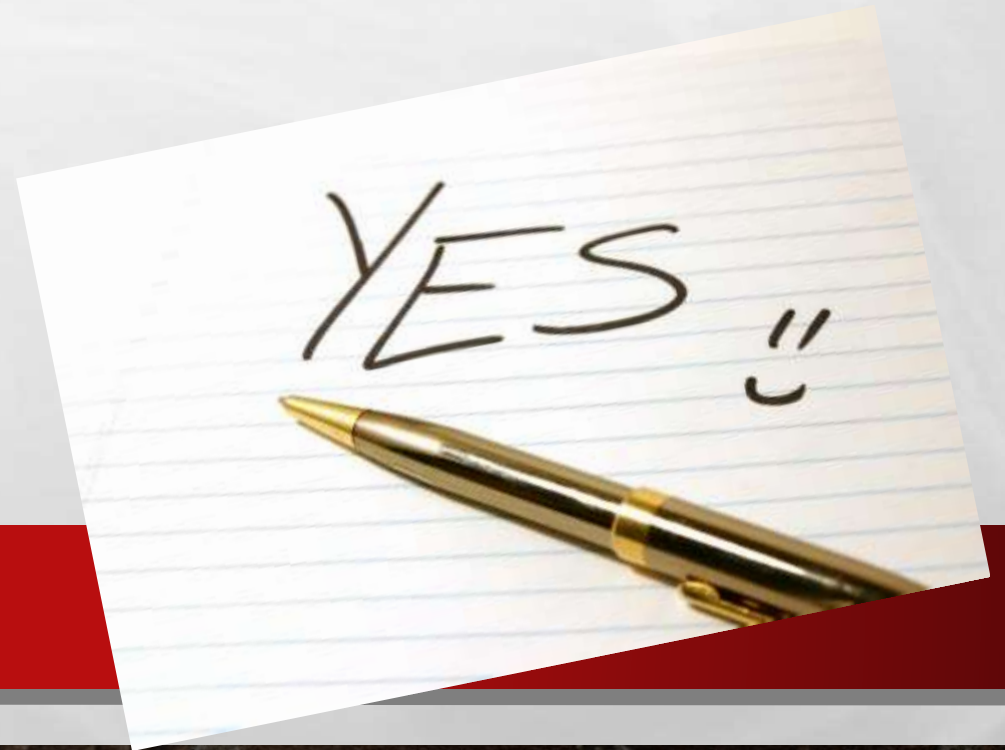
# PROMOTION POLICY

- **MOVING ON TO 10<sup>TH</sup>  
GRADE REQUIRES 5  
TOTAL CREDITS**



# PROMOTION POLICY

- **MOVING ON TO 10<sup>TH</sup>  
GRADE REQUIRES 5  
TOTAL CREDITS**



# **HOW CAN I HELP MY CHILD SUCCEED?**

- **CHECK HOME ACCESS CENTER FREQUENTLY**
- **TALK TO YOUR STUDENTS ABOUT WHAT THEY ARE LEARNING**
- **CHECK THE SAHS WEBSITE AND TEACHERS WEBSITES OR EDMODO**
- **EMAIL OR CALL TEACHERS IF YOU HAVE A QUESTION**
- **SET UP A PARENT TEACHER CONFERENCE**
- **IF THEY ARE STRUGGLING – JACKET PREP AFTER SCHOOL TUTORING WEDNESDAYS – INCLUDING TRANSPORTATION!**

# **GUIDANCE COUNSELORS**

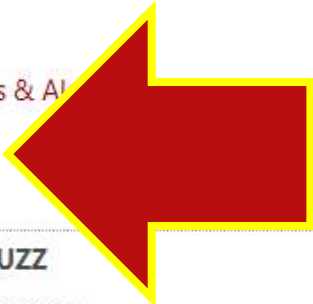
- **ESE – MS. NOVELLY**
- **AICE - MS. BECHTLE**
- **STUDENTS A-G – MS. OLSON**
- **AVID AND STUDENTS H-N – MS. FREEMANN**
- **STUDENTS O-Z – MS. RADAKER**



# St. Augustine High School

## MAIN MENU

- Home
- Athletics
- Departments
- Events
- Home Access Center
- Media Center
- News
- SAC
- Messages & Alerts
- Staff



## DAILY BUZZ

Friday 05/30/14

Thursday 05/29/14

If you are a person with a disability who needs assistance and planning to attend a school meeting or program, please contact SAHS with your specific need at 547-8530.

## Welcome to St. Augustine High

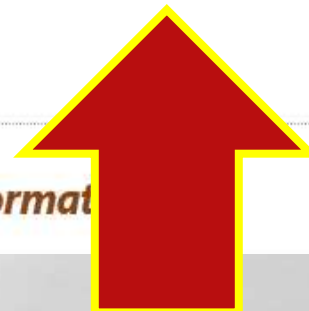


St. Augustine High School

## Jacket Life



Hi Yellow Jackets! Click on me for [additional school information](#).



## Important Dates / Information

# **THE STUDENT PERSPECTIVE**

**RYAN APONTE, SENIOR CLASS PRESIDENT**



# CLUBS AND ACTIVITIES

<b>National Honor Society</b>	<b>Dance Team</b>	<b>Band</b>	<b>Chorus</b>	<b>Drama</b>
<b>Musical Theater</b>	<b>Sports</b>	<b>Class Officers</b>	<b>Hi-Q</b>	<b>Book Club</b>
<b>French Club</b>	<b>Writing Club</b>	<b>Yearbook</b>	<b>Relay for Life</b>	<b>Spirit Week</b>
<b>JROTC</b>	<b>Cheerleading</b>	<b>Spanish Club</b>	<b>Key Club</b>	<b>Interact</b>
<b>Beta Club</b>	<b>Marine Science Club</b>	<b>Diversity Club</b>	<b>Africlub</b>	<b>AICE Advisory Board</b>

**And more!!!**



# **ATHLETICS**

**JEFF HOLLAND, ATHLETIC DIRECTOR**



# TRADITIONS AND SPORTS

- **WHY THE YELLOW JACKETS?**
- **RECENT ATHLETIC ACCOMPLISHMENTS**
- **HOW TO GET INVOLVED WITH ATHLETICS AT SAHS**



# ATHLETICS AT SAHS

<b>Baseball</b>	<b>Basketball</b>	<b>Cross Country</b>	<b>Football</b>
<b>Golf</b>	<b>Lacrosse</b>	<b>Soccer</b>	<b>Softball</b>
<b>Swimming</b>	<b>Tennis</b>	<b>Track and Field</b>	<b>Volleyball</b>
<b>Weightlifting</b>	<b>Wrestling</b>		

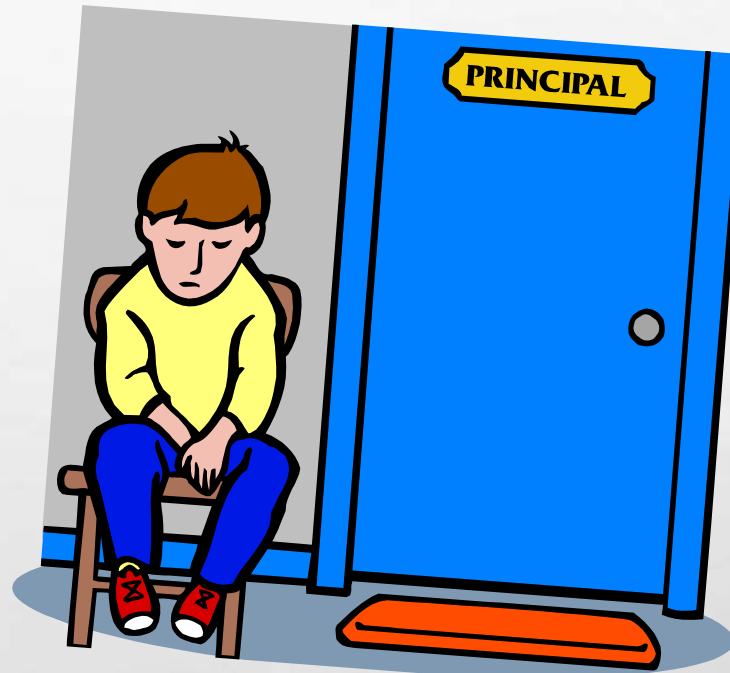
# **BEHAVIOR EXPECTATIONS**

**ALBERTO CRESPO AND WANDA LOGAN, DEANS**



# TOP 5 WAYS TO STAY OUT OF THE DEAN'S OFFICE

- 1. CELL PHONES**
- 2. DRESS CODE**
- 3. TARDIES**
- 4. SKIPPING**
- 5. DISRESPECT**



# DRESS CODE REMINDERS

- **READ SAHS PLANNER**

- **LADIES**

- **NO LOW CUT SHIRTS, NO EXPOSED MIDRIFTS**
- **SHORTS/SKIRTS/DRESSES MUST BE NO MORE THAN 3 IN ABOVE THE KNEE**
- **NO YOGA PANTS, SWEATPANTS, LEGGINGS, TIGHT STRETCHY SKIRTS**
- **NO EXPOSED UNDERGARMENTS**

- **GENTLEMEN**

- **PANTS WORN AT THE WAIST**

**Note: Clothes must be in dress code at ALL times – sitting, standing, walking, etc. If at any point the clothes are out of dress code, you are out of dress code and will have to change clothes or go to I.S.S.**

**BE HERE, EVERY DAY, ON TIME, DRESSED  
FOR SCHOOL.**

**ACT RESPECTFULLY AND RESPONSIBLY**

**STAY OUT OF THE DEAN'S OFFICE**



# **ORIENTATION & FIRST DAY OF SCHOOL**

**GEORGE MASTORIDIS, ASSISTANT PRINCIPAL**





# **ORIENTATION – FRIDAY – 9AM-2PM - GYM**

## **• BRING:**

- STUDENT INFORMATION VERIFICATION SHEET**
- COMBINATION LOCK FOR LOCKER**
- OPTIONAL – MONEY TO PURCHASE GYM UNIFORM, CLASS T-SHIRT, ETC.**

## **• YOU WILL RECEIVE:**

- SCHEDULE**
- SCHOOL ID**
- TEXTBOOKS (CHECKED OUT LIKE LIBRARY BOOKS)**
- LOCKER (IF YOU BRING A LOCK!)**

# LOCKERS

- **IF YOU WANT A LOCKER, YOU MUST BRING A COMBINATION LOCK**
- **NO KEY LOCKS ALLOWED**
- **YOUR LOCKER WILL BE ASSIGNED TO YOU**
- **IF YOU DON'T HAVE A LOCK, YOU CAN GET A LOCKER THE FIRST WEEK OF SCHOOL DURING LUNCH**



**FIRST DAY OF SCHOOL**



# WHAT TO EXPECT

- **GO TO HOMEROOM FIRST**
- **HOMEROOM LISTS WILL BE POSTED IN THE MORNING (LOOK FOR THEM WHEN YOU GET TO SCHOOL!)**
- **RECEIVE: UPDATED SCHEDULE, FORMS TO BE SIGNED, PLANNER, SCHOOL BAG, CODE OF CONDUCT, LUNCH FORMS, ETC.**
- **LUNCH ASSIGNED BY 4<sup>TH</sup> PERIOD TEACHER**
- **EACH TEACHER WILL GIVE YOU A SYLLABUS (SUPPLY REQUIREMENTS, GRADING, ETC.)**

## WHAT TO BRING:

- **Pencils/Pens**
- **Paper**
- **Folder**
- **Summer Assignments**

# USE YOUR PLANNER!!

- **IMPORTANT INFORMATION**
  - **RULES, POLICIES, PROCEDURES**
- **GREAT ORGANIZATIONAL TOOL**
  - **RECORD ASSIGNMENTS AND DUE DATES**
- **SERVES AS YOUR HALL PASS!**





**Buses**

**Media**

**Guidance**

**Parent Pick-Up**

**PA (Arts)**

**Cafeteria**

**Gym**

**R**

**B**

**C**

**D**

**E**

**G**

**Ball**

**Back Hall**

Weightroom

Teache lounge

Cafeteria

Auditorium 700

MAIN ENTRANCE





**Buses**



**LOST???**  
**ASK A**  
**LINK**  
**LEADER!!!!!!!**



# **HIGH SCHOOL STARTS AUGUST 18<sup>TH</sup> AT 9:15**

**EVERY DAY COUNTS**

